



**File Name:** cantar x manual.pdf

**Size:** 3681 KB

**Type:** PDF, ePub, eBook

**Category:** Book

**Uploaded:** 15 May 2019, 15:34 PM

**Rating:** 4.6/5 from 712 votes.

**Status:** AVAILABLE

Last checked: 8 Minutes ago!

**In order to read or download cantar x manual ebook, you need to create a FREE account.**

[\*\*Download Now!\*\*](#)

eBook includes PDF, ePub and Kindle version

[Register a free 1 month Trial Account.](#)

[Download as many books as you like \(Personal use\)](#)

[Cancel the membership at any time if not satisfied.](#)

[Join Over 80000 Happy Readers](#)

### Book Descriptions:

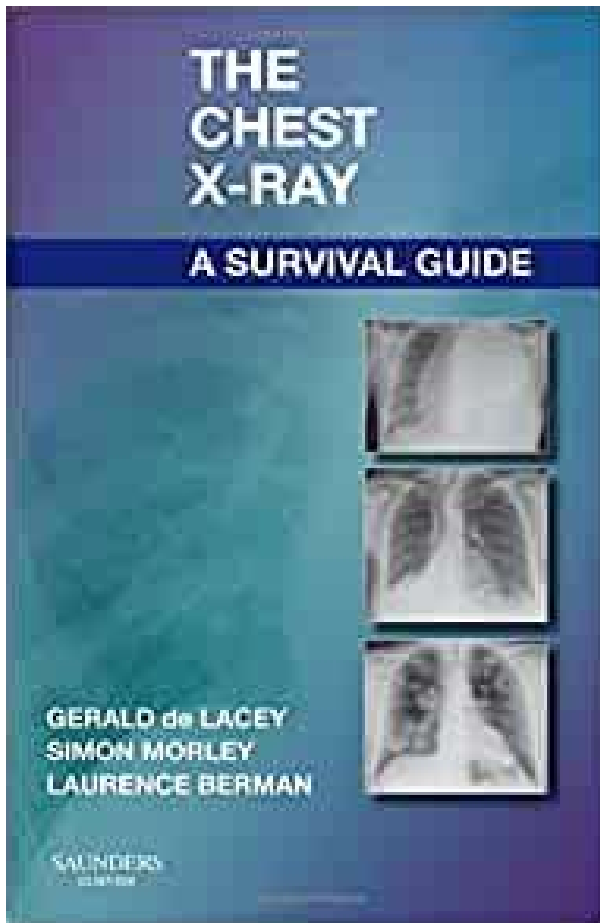
We have made it easy for you to find a PDF Ebooks without any digging. And by having access to our ebooks online or by storing it on your computer, you have convenient answers with cantar x manual . To get started finding cantar x manual , you are right to find our website which has a comprehensive collection of manuals listed.

Our library is the biggest of these that have literally hundreds of thousands of different products represented.



## Book Descriptions:

### cantar x manual



In sound recording operation the large all weather crowns are constantly used to check and select the In the Main Selector various monitorouts and routeins configurations with one hand only. The day Aaton LiIon batteries are available March 2005 the 22 hour Cantar will approach the proverbial Nagra4 endurance. And with the twin battery system you will never be taken by surprise. This is the safest way to sort huge amounts of files and never overwrite one. It also is the simplest way to insure autoconformation between the polyphonic 16bit bounced files sent to the editor, and the original monophonic 24bit files going to Pyramix or Protocols through Titan3. Using the jog, select the an Aaton GMT or an Ambient ClockIt trilevel gene desired figure, with arrows move on to the next rator. Atc Ascii shows in the message panel. In the sync sound world Cantar is perfectly inde If you nevertheless want to pendant of the actual camera speed, but because power down Cantar at lunch of some Avid software versions and Mac OS levels, time, the blinking intc icon at. When accessed from the solo list, the mixer output 12 o'clock MX is stereo monitored and shows on the rightmost In REC a red LED lights up in modulometer. Files of the Day Wake up Hdd. Main selector on PLAY, the last recorded file is played. Do not hesitate to as any track. It allows the use of either 12.5V recorder dayin dayout use. The checking operation lasts the same time as the disk burning. 7 FileNames Short Long w. Recording is done simultaneously on an internal M2Sata SSD and two SD cards. Works with two pluggable batteries using smart battery technology. Of course, most of the software comes across also from the welldeveloped CantarX3 software. Power management information, external and onboard smart batteries. Timecode and remaining recording time. Vuemeters and track settings Up to three Custom PDF, ALE or CSV sound reports. Media formatting InGrid configuration

• **aaton cantar x manual, 1.0.**

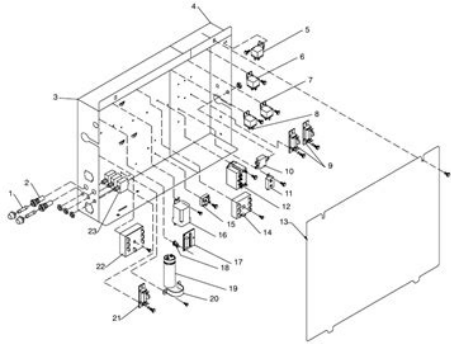
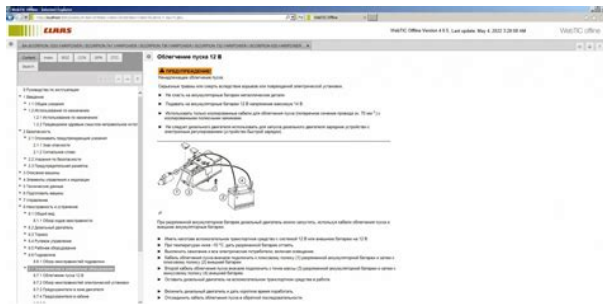


Figure 13-3. Control Box Assembly - CC/CV Models

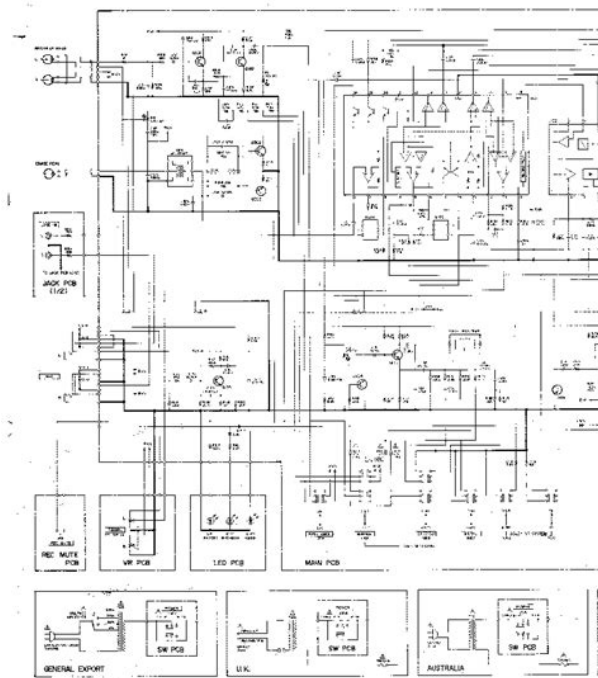
| Item No.  | Qty. | Part No.       | Description                                     | Quantity |
|---|------|----------------|---|----------|
| Figure 13-3. Control Box Assembly - CC/CV Models (Figure 13-1 Item 114) |      |                |   |          |
| 1   | 2    | F1, F2         | FUSE, mini cer sio-blo 10A 250V                 | 2        |
| 2   | 2    | 046 432        | HOLDER, fuse mini, .250 x 1.250                 | 2        |
| 3   | 1    | 201 077        | CONTROL BOX, lh                                 | 1        |
| 4   | 1    | 201 078        | CONTROL BOX, rh                                 | 1        |
| 5   | 1    | CR3            | RELAY, encl 12VDC SPST 30A/15VDC spn flange mtg | 1        |
| 6   | 1    | CR6            | RELAY, encl 12vdc spst 30a/15vdc spn flange mtg | 1        |
| 7   | 1    | CR1            | RELAY, Encl 12vdc Spst 30a/15vdc Spn Flange Mtg | 1        |
| 8   | 1    | CR6            | RELAY, encl 12vdc spst 30a/15vdc spn flange mtg | 1        |
| 9   | 2    | DIRCCT, DIRCCT | DIODE/CAPACITOR BOARD                           | 2        |
| 10  | 1    | CB14           | CIRCUIT BREAKER, auto reset 12vdc 8 amp         | 1        |
| 11  | 1    | CB10           | CIRCUIT BREAKER, auto reset 12VDC 40A           | 1        |
| 12  | 1    | CR5            | RELAY, encl 12VDC spst-no 25A 6pin flange       | 1        |
| 13  | 1    | 201 079        | COVER, control box                              | 1        |
| 14  | 1    | PC7            | MODULE, pull to idle, two output, 7 pin         | 1        |
| 15  | 1    | SR1            | RECTIFIER, integ 40A 800V                       | 1        |
| 16  | 1    | CR4            | RELAY, encl 12vdc spst 30a/12vdc spn flange mtg | 1        |
| 17  | 1    | PC9            | CIRCUIT CARD ASSY, display                      | 1        |
| 18  | 3    | 134 201        | STAND-OFF, support pc card                      | 3        |
| 19  | 1    | C9             | CAPACITOR, electr 240uf 200VDC                  | 1        |

Mixdown setup with fine pan possibility Optional Dante out map, user defined setup Metadata modification, batch editing. Audio file rescue and file deletion. Pre or Post fader playback mode, monitoring selection. Metadata modifications Quick access with shift button. Our Tentacles stay in sync for up to 24 hours after being synchronized at the start of the day. Their builtin batteries last even longer. Clock you can power the Cantar X down without the need to resync afterwards. Submit a request The data transmission is encrypted. Further information on data protection can be found in our privacy policy. There is 1 item in your cart. More details Add to Compare Add to wishlist More info Download Reviews Worthy successor of CantarX 2 here is the Cantar X3 from Aaton. This new record has been designed by the same team as the previous Aaton devices. The ergonomics of CantarX2 and his legendary mic preamplifiers are instantly recognizable, but have been redesigned to improve the signal-to-noise ratio and provide new filtering capabilities, while adding new features like Dante, IP audio system from Audinate. The water and dustproof aluminium body is equipped with a cover manufactured by the military industry. Its exceptional operating life makes it the ideal tool on the field. The magnetic linear potentiometers are longer, more numerous, the push buttons are now silent, perfect for a concert hall. Avionic aluminium box. Water-resistant and dustproof. Linear control faders addressable to any inputs and output. Linear control faders assignable to Mixdown of 10 isolated tracks to 1 or 2 mixdown tracks, mixdown can be assigned to any of the tracks. Simultaneous recording to multiple media, or backup copying of recorded tracks post-record. New improved interface menu accessible through buttons, jog wheel. Sample Rate Converters on all digital inputs. Variable Delay on all analog inputs and outputs. 10-second pre-record buffer. <http://euro-logist.ru/userfiles/dynacord-drp-20-service-manual.xml>



Generous 48V phantom supply guarantees 8mA to each of the eight microphones. Highpass filters before preamp stage, LFA and EQ. Native monophonic BWF recording with optional polyphonic realtime mirroring to removable media. Selfgenerated PDF and CSV sound reports embedded with deliverable media. Metadata entry of Scene, Take, Notes, Track Names, Roll and more with support for US and Eurocentric metadata templates. Aaton AutoSlate automatic slate clap detection and logging. Builtin slate mic with external slate input on 3.5mm connector. High precision 1ppm timecode generator supports all common frame rates. Remote Record and Stop triggered by external timecode. Enhanced playback monitoring with waveform display on front panel. USB keyboard input for easy metadata editing and routing control. X3 reads and displays battery metadata. Compatible with the original Cantarem. Accessories Multiple batteries chargers configuration 2 to 20 sockets in simultaneous charging. Softwares Tarkan, Majax updated for last OS 2015. These two new versions of our industry standard RF Six Pack allow operation with today's new legal frequency blocks. The "Single Band" model operates from 470Mhz to 700Mhz and the "Dual Band" model operates from 470Mhz to 618Mhz and also from 940Mhz to 960Mhz Lectrosonics™ 941 Block. Powered by Aaton. We are pleased to announce that the Aaton Company has developed a special interface PCB for use inside our PSC RF Six Packs. This optional interface PCB can be factory installed inside new units. This interface allows the RF Six Pack to "talk" to the Cantar and Cantar Mini Recorders. The interface will allow Cantar users to view RF performance of their slot receivers as well as RF scanning functions, transmitter battery level, receiver frequency settings and more. This optional PCB can be factory installed by PSC in new units. It allows the PSC RF Six Pack to directly interface to the Aaton Cantar and Cantar Mini recorders.

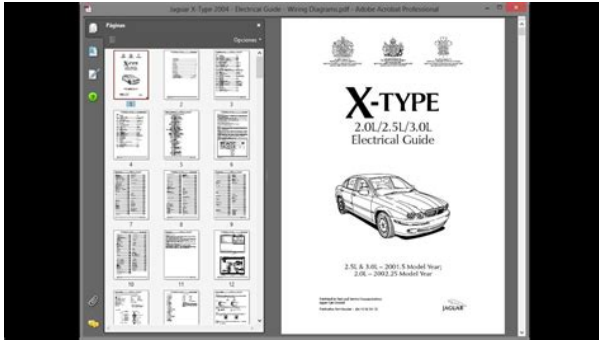
The interface option allows Cantar users to directly view information about their wireless on the Cantar screen. This information includes RF Frequency Scanning, RF Receiver Frequency Selection, RF Signal Strength, Transmitter battery levels and more. The interface adds a USB connector to the righthand side panel of the PSC RF Six Pack for use in connection to the Cantar and Cantar Mini recorders. Existing PSC RF Six Packs version 2 only can be upgraded through participating Aaton Dealers worldwide. Thereby for example the session information or language setting are stored on your computer. Without cookies the range of the online shops functionality is limited. Does it make sense to buy this recorder in 2019? Prior to this I have only considered SD gear or maybe a F8n if all will be wireless anyway and looked at Zaxcom out of curiosity, but didn't glance at Aaton after seeing the price tag once upon a time. The manual I found even covers x1 and x2. I hate to ask this but what is the difference and how many channels of audio can you record? I see it mentioned that X2 can do extra tracks via wordclock, whereas the x1 cannot or has this been changed via FW. Apart from getting another Cantar, could you expand 6 channels via something else such as a sound card? But, it is entirely possible to record eight independent tracks. The X2 version supplements this with additional digital inputs. If you have someone available you trust to check it out and maintain it and the track count works for you then rock on. It's still an amazing machine. But, it is entirely possible to record eight independent tracks. The X2 version supplements this with additional digital inputs. So do I understand you correctly that if you utilise 8 inputs you don't have a mix track as that takes up two channels? 8 inputs should cover most of what we do at the moment, but 6 is about the same as we have in our units.



<http://www.raumboerse-luzern.ch/mieten/bosch-wae24271au-manual>

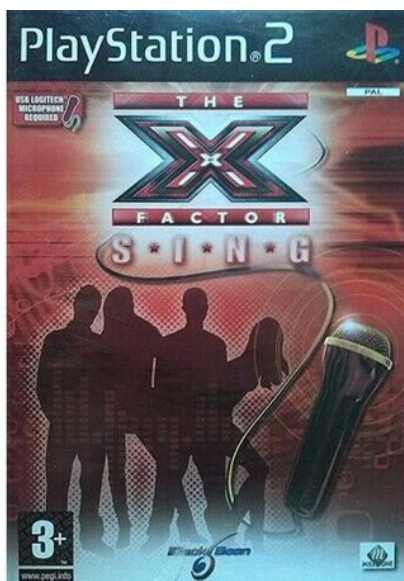
If you have someone available you trust to check it out and maintain it and the track count works for you then rock on. Its still an amazing machine. But it is possible to record seven tracks plus a Mix track. You could ask for a factory checkup before buying. So do I understand you correctly that if you utilise 8 inputs you dont have a mixtrack as that takes up two channels 8 inputs should cover most of what we do at the moment, but 6 is about the same as we have in our units. You only have 8 recording tracks, period. What you can do is combine as many inputs as you want onto a recording track though, so you could for example record mic 1 and line 1 on track 1, then use the gain pots to mix the 2 inputs or more to a single recording track. The digital inputs can also be combined with analog inputs, but obviously there is no gain pot for the digital inputs, so gain cant be adjusted nor can they be muted on the Cantar while rolling. So for example, you could assign digital 1 to 6 to tracks 1 to 6, then mic 1 to track 7 and mic 2 to track 8. The only problem is that you would never be able to bring tracks 7 and 8 into the mix unless you are using the Cantarem which has 8 faders other than mixing with the trims. There are digital direct outputs of the first 6 recording tracks as well as an assignable digital output. For analog outputs there is a balanced output on XLR5 and a foldback output on unbalanced TA3. Any of the outputs, wether digital or analog, can be assigned to the mix output OR can be a matrix output of some sort including inputs that are not being recorded, if you want a communications feed for example. So in this way you could record 8 ISOs, then send the output to a 2track recorder to record the mix. In my case I have a Zaxcom IFB200 hooked up to the AES output and in this way could record 8 ISOs and deliver a separately recorded 2 channel mix if it was really necessary, but generally use the Cantar on jobs where 6 sources cover it.

<http://istacover.com/images/cadillac-manual-transmission-for-sale.pdf>



You have to know why you want to use it and not be talked out of using it by common sense. From a value perspective, it just never really makes sense, unless you are getting a really good deal on it. I like that I can take it into the rain. I can honestly say it is the most reliable recorder Ive used, beating out every Sound Devices or Zaxcom unit Ive driven. Shit happens, even to Cantar. I like that it is impossible to wash out the meters with sunlight. I mean literally impossible you can try, but with the sun in our solar system on the planet earth, you cant do it, youll blind yourself before the meters are not readable. I like that there is a menu system that allows lots of flexibility, but once your rolling, the things that you would want to adjust while rolling, are done with tactile buttons, faders, and pots. Shit is confusing sometimes. I still have to break out the manual occasionally when doing something I havent done before or done in awhile. I can say, though, after years of using it, that I develop a muscle memory and I personally find the operation very easy. Its just the first time you try to turn it on, you cant. you look at the manual, figure it out, then after practicing for awhile, it becomes second nature. Same thing goes with pretty much every other function of the unit. I would compare it to flying an airplane versus driving a car. The average person cant jump into a cockpit, figure out how to start the motor and do all the other preflight stuff but after training and experience, you become expert on it, and if you need to do some sort of emergency maneuver, good training and experience will pay off. Pretty much anybody with any level of training can jump into any car and figure out how to get going. Id say that is the Sound Devices approach. I then put a 128GB SanDisk CF card in it, formatted for 120GB Cantar wont recognize more. This has been 100% reliable for me and if I ever needed to replace with main volume, its just a card swap away.

<http://istvantaborosi.com/images/cadillac-manual-transmission.pdf>



Sometimes when I need to backup content to my main storage RAID, I pull the main card and just

use a card reader, rather than the antique firewire connection. I have also purchased an IDE to CFAST caddy. I haven't bothered to try to install it, but the logic is that if there was some reason for me to go CFAST, I could have seen that reason yet. DVDRAM is obviously worthless today. If you do buy a unit, make sure it has the CF removable media bay OR you know where to buy one. I looked it up and found two references to it. see pictures Using an external recorder to record a mixdown and save two channels is obvious but I didn't think of it, thanks for the idea. I am used to just put the gain in the ballpark when shooting solo. Maybe I am missing something, but it seems a bit of a shame not to include a mixtrack since the cantar has some lovely faders. Paste as plain text instead Display as a link instead Clear editor Upload or insert images from URL. The harness comes in a size that fits most users. Please note that product specifications are subject to change without notice and versions of products shown on this site may not yet be available in your local market. While we try to provide the most accurate information available, we cannot be responsible for typographical errors on the site or lack of inventory among our dealers. Orca Bags Ltd. The ORCA "Flip Flop" folding reusable Great for use on The Orca audio Organizer pouch can be used to securely store microphones, connectors, cables, CF cards. Here are the instructions for how to enable JavaScript in your web browser. Once you've enabled Javascript, please refresh this page. Designed and manufactured by one of the world's leading pool manufacturers Atlantic Pools, this pool will provide many years of family fun. Resin above ground pools like the Aruba are an improvement on the traditional steel wall pool. They incorporate unsurpassed beauty and strength in a corrosionproof pool structure.

If you want the ultimate in quality and style for your family, invest in Aruba's premium features. From the internal ribbing in the top seat to the double lock system around the base of the pool, this pool is designed for rugged durability and many years of family fun. And, as an added bonus, the beautifully designed top rail and decorative seat cap give the Aruba its designer good looks. Neither midsummer sun nor driving rain and ice can cause these members to corrode as they can with a steel above ground pool. Because resin is noncorroding by its very nature, there are no coatings to apply that can eventually chip, crack, or fail. Our Aruba above ground pool gives you the designer beauty that resin affords, plus the added benefit of a corrosionproof structure that will outlast any steel pool available. Our above ground pools come standard with a widemouth skimmer and return fitting. A free installation DVD and manual gives you stepbystep instruction, making installation quick and hasslefree. The Aruba is backed by a 60Year Limited Warranty. Other items such as the swimming pool liner, pump, and filter are sold separately. Click here to Customize one of our Above Ground Pools You might want to reach out to Wilbar 6319519800 to see if they have a part number that we provide to replace that for you. Fluxos de trabalho digitais para atividades diarias perfeitas. De graça e fácil de usar. Leia mais. An intuitive LCD display provides more manual options and 12 compatible channels in a stable UHF band. XS WIRELESS 2 grows with your demands by offering an intuitive LCD display for more manual options and 12 compatible channels in a stable UHF band, withstanding tougher live stage conditions. The XS WIRELESS 2 VOCAL SET is an easy to use allinone wireless system for singers and presenters featuring Sennheiser's renowned evolution microphone capsule e835 superior dynamic, cardioid to perform under pressure.

<https://retentionstudentexperience.com/wp-content/plugins/formcraft/file-upload/server/content/files/16273241f51298---briggs-and-stratton-parts-manual-pdf.pdf>

True Diversity receiver in a metal housing and rackmount kit included. NOTE The unit automatically selects the next available unused frequency. To do this follow these steps Once the SQUELCH setting has been increased repeat the steps of the frequency scan and then SYNC accordingly. Typically for general speaking the sensitivity should be set around 15 to 18 dB. You will need to adjust this depending on the exact application. Adjusting closer to 0 dB is will be more sensitive and further away from 0 dB is less sensitive. If the microphone is too sensitive the input will overload the

microphone and the AF level will peak and the audio will be clipped. It is suitable to adjust the level so that the AF peak indicator lights up only briefly during the loudest passages. If you are connected to equipment expecting a mic level input you will typically need to drop this AF output down to 24 dB or 30 dB. If your equipment has the option, it is best to try to run the equipment in line level mode. Firstly check that the transmitter and receiver are both on the same frequency as this is key to the system working. The best way to do this is click the mute switch on and then back off. If using a body pack transmitter make sure that the microphone or guitar cable is securely in place by disconnecting it and reconnecting it. NOTE On the handheld microphone the capsule is locked into place and cannot come loose. If you are seeing RF and AF levels on the receiver but do not have any sound through your system it would be recommended to check the cables between the receiver and sound system, check the inputs on the sound system and check the AF out level on the receiver to ensure that it is set to the appropriate level for your sound system. We are a nonprofit group that run this service to share documents. We need your help to maintenance and improve this website. It's InBodybody composition analyzer. Your health is divided into before and after turning InBody Dial.

Every morning, check your body composition right at home on InBody Dial! What you must pay attention to is not your weight but your body composition. Find the BALANCE of body composition for a healthy body with InBody Dial. InBody Dial InBody H20B is a home use body composition analyzer which utilized InBody's patented technology. The accuracy and reliability of InBody recognized by the world's best scholars. The world's best accuracy, preciseness, reliability, and sensitivity. Your InBody score is shown in graph. Pay attention to the changes in your body. You can download InBody App in Google Play Store or App Store. Manage your Kids' growth in smart way with InKidsFloor must be solid and flat ground. Ultrasonic wave changes the speed in accordance with the ambient temperature. We will never sell your data, and you can unsubscribe at any time. Further information on how your data is used, including our responsibilities and how you can unsubscribe can be found here. We will never sell your data, and you can unsubscribe at any time. Further information on how your data is used, including our responsibilities and how you can unsubscribe can be found here. Latest findings from our Youth TGI consumer data, which examines the behaviour of young people, and gauges the popularity of around 30 popular music acts, reveal how some acts enjoy success across the age ranges of the young, whilst others see popularity amongst a narrower tranche of children and teenagers. Linguee Look up words and phrases in comprehensive, reliable bilingual dictionaries and search through billions of online translations. Blog Press Information Linguee Apps You helped to increase the quality of our service. You must have JavaScript enabled in your browser to utilize the functionality of this website. Today, you'll find Marsden digital weighing scales around the world, from the USA to Africa and we're now proud to be able to meet just about any weighing need.

Este formato que presento aqui es usado por muchos pilotos y basicamente fue el mismo que usamos durante el tiempo que corri con Omar Chavez, el mismo que me mostro un entrenador espanol Antonio Zanini de como ensenan a los copilotos en Espana y el mismo que me ensenaron durante el curso en Italia en la escuela de copilotos de Vittorio Caneva. En fin creo que es el mas usado pero no el unico metodo ya que cada piloto puede tener una forma diferente de hacer un levantamiento. m. DIFERENCIA ENTRE LIBRETA DE RUTA Y LEVANTAMIENTO En un rally de velocidad existen 2 tipos etapas. x m o c. ETAPAS DE TRANSITO. Es el camino que se utiliza para llegar a una etapa de velocidad, durante estas etapas el carro debe de cumplir las reglas de Transito de la ciudad donde se realiza el Rally. Por lo general pueden ser tramos en la ciudad o carreteras transitadas. ETAPAS DE VELOCIDAD. Esta es la etapa donde el auto de rally realmente compite con su velocidad, en estas etapas los tramos estan cerrados, los unicos autos que pueden transitar por esas etapas son los autos de rally y arrancan cada 2 minutos entre cada uno. La LIBRETA DE RUTA es proporcionada por el organizador del rally y todas son exactamente iguales. En ella se incluyen senalamientos de



transito, velocidades y muchas mas indicaciones que le ayudaran a la tripulacion llegar a la siguiente etapa de velocidad. El siguiente ejemplo es el instructivo que se incluye en la LIBRETA DE RUTA del rally Mexico 2006, por ser un evento internacional la libreta viene en ingles pero en el campeonato nacional todo esta en espanol. x m. m o c. y ll w a r. w w 3 Tambien se incluyen todos los mapas, el itinerario, un reglamento particular y la famosa senal de SOS que los pilotos muestran cuando tienen algun accidente. x m. m o c. El siguiente ejemplo son las 2 primeras paginas de la libreta de ruta del Rally Mexico 2006 del enlace de transito de POLIFORUM hacia la etapa de velocidad de COMANJILLA. y ll w a r. w w 4 x m. m o c. y ll w a r.

LA LIBRETA DE NOTAS o LEVANTAMIENTO w El LEVANTAMIENTO se realiza por lo general 2 dias antes de arrancar un rally, se tiene derecho a recorrer los caminos 2 veces a una velocidad controlada por lo general a 80 km, esta velocidad la fija el organizador del rally y si se rebasa el limite durante el LEVANTAMIENTO puede ser descalificado del rally. Todas estas notas se escriben en una libreta. m o c. Como lo comentamos al inicio existen muchas formas de hacer las NOTAS pero la siguiente es la comun y facil de entender. Puede ser 50, 100, 200 etc. Dependiendo de la ruta. No existe una forma de saber que grado es cada curva dependiendo del piloto y del auto sera el grado que le asigne. Para un piloto con un auto de 250 HP doble traccion, no sera el mismo grado la misma curva, que para un piloto en un auto con 150 HP. Uno de los ejercicios que se hace para los principiantes, es que le pongas cintas al volante del auto y experimentes tu mismo que grado es una curva. x m. m o c. y ll a r. Una curva grado 0 seria una curva a toda velocidad y una curva 5 tendria mucha dificultad, en competencia los grados de las curvas quedarian asi w w w 7 Algunos pilotos usan mas grados hasta 10 inclusive hay algunos que manejan. OTRAS CARACTERISTICAS. Seria toda la informacion adicional que nos ayude a tomar de una mejor forma la curva o evento siguiente. Esto podria ser por ejemplo X Dentro, X Fuera, Cortar, No Cortar, con Grava, Resbalosa, Etc. Debemos de saber cuantas curvas o eventos adelante puede asimilar el piloto, por ejemplo hay pilotos profesionales que pueden asimilar hasta 4 o 5 curvas adelante y otros pilotos que solo podran con 2. Lo importante es que cuando te encuentres en un tramo de velocidad el piloto NO te diga "Que sigue" "Mas espacio" etc. Etc. Tu como copiloto debes saber en que momento debes de cantar la curva o curvas que siguen. We are a nonprofit group that run this service to share documents. They are the best of all.

Its transparency, the obviousness of the recordings made with the cantar x. Its design and userfriendliness, it works perfectly under humid conditions. for documentaries or feature films. The ease and versatility of its routing. By using our services, you agree to our use of cookies. Find out more. Enter this password with your address in the login page. Click lost password, CantarX1 vs X2 Wider FPGA delays Board ET1. Cantar software is accessible to registered owners only; beta versions are not to be used for commercial assignments. Cantar Users Group Exchange tips with other cantarists Pictures on the road Send us your Cantar at work pictures, we will put the best ones on the gallery Post Production helper Spread the tutorial around and Wordclock sync require X2 hardware. Firmware history TC stored in MarkIn column. HD and DVD RAM. PPR keyed TapeRef HEX char. HD1080 flag in ALE header. Up to twenty stored setups. Takegender resets to t after scene ID change. MS jog pan direction identical to others. 250MB auto jump keeps eight track polys under 2GB. ALE incremental Index replaced by SqScTk; first AutoSlate files TC. BattAlert extended to 15V for LiIon batt. Improved SATA disk manager. No more freeze when playing Majax cantarized foreign files. v2.26 Feb Idle Bckp can be interrupted while saving T7T8 after a T1T8 Rotate2poly. Direct PLAY of the take preceding a deleted one. Fat32 formatting of CF cards. Linein links for Soundfield ST350. Rotate poly by one or two ranks. DVD RAM exact space is displayed. Storage of projects soundreport headers with save setup. Same clockwise jog for TC and operands. v2.11 Jan New PLAY commands. This concept has the notable side effect that no plugs protrude from the sides; this allows third party designers to build very narrow Made for Cantar carts. To remove the DVD caddy, remove retaining screw A picture below, introduce a ball pen into hole B and push it toward

the front opening where you can grab the caddy.

The CF caddy is held by spring tension only and the A screw is not used. ref. A B the should be used at all times gafftape if your Cantar is not equipped with it to avoid intermittent contact or sudden cable pullout. An intermittent FW connection induces bus hangs and can stop recording on both the external and internal drives. Backup caddy The DVD and CF caddies are easily swapped p.43, p.54. DVD CF p.6 7 DESCRIPTION CIRC. SCREENS p.7 Three Circular screens These are the largest, easiest to read screens found on any audio recorder. They provide the user with ongoing data concerning every aspect of the machines operation. It takes a few moments to get used to the display paradigms but thereafter you will be driving the fastest machine you have ever had in your hands. Digital sources digiin 1 6 can be sent to any one of the T1 T6 tracks. 2 Output maps The Cantars three screen mapping is self explanatory. Audio signals going to the left ear appear on the left screen, signals to be listened to in mono appear on the middle screen and those going to the right ear appear on the right screen. The middle screen displays, the current preset in use To create inputstotracks InGrids, read p.27. Fifteen InGrids can be stored in three banks to help you sort and memorize your routing configurations, e.g. A1 to A5 for mic only setups, B1 to B5 when some lineinputs are used, C1 to C5 for setups that include digiins. The rank of the pan activated track is displayed in the central screen. The peak level segment hold duration is adjustable from one half to five seconds in TECHSET.13 p.34. The tracks are grouped into natural pairs T1T2, T3T4, T5T6. When a track is momentarily disarmed, its modulometer appears dashed. 5 Monitoring physical status The center of each circular screen continually displays the status of the main recording elements threeplatter icon on the left screen, the external HD threeplatter icon on the middle screen, and the DVD oneplatter icon on the right screen.

In TEST or REC top row T7T8 modulometers in dbfs Clip. The large all weather triple crown is used to check and select the routings with only one hand. The OPERATING West positions control the recording, annotation and playback of audio files. The rectangular screen lights up. Cantars cold start from an unpowered machine to recording is a blazing two to three seconds. On the left circular screen, the threeplatter icon blinks the time it takes for the disk to spin up to speed; it is surrounded by the icons of the routed tracks. The rectangular screen displays battl and battr voltages, plus the system day and time. For safety, if you are not in STOP, nothing happens. Reminder while in STOP, internal HD sleeping, the current drain is a mere 270mA. To keep the internal synclock running, do NOT turn OFF Cantar during the workday. Twin battery safety Cantars low power consumption electronics offer the longest operating time of all portable eighttrack audio recorders. With a single set of onboard LiIon batteries, the eighteen hour Cantar outperforms all other recorders. And with the twin battery system you will never be taken by surprise. While in REC, both batteries are permanently put on duty, in case you unplug one by mistake. While working on a cart from a mains power supply, leave a battery onboard and activate both inputs the battery will buffer possible mains power problems, e.g. power cord accidently disconnected, and it will supply the 4A surge at Cantars startup off duty the rest of the time, thanks to the power supply higher voltage. When the active battery drops 300mv below the alert level both are put on duty. 16.6V is the maximum sustained voltage on any socket including the FireWire socket. Extract the HD it can sustain up to 40V, and connect it directly to the desktop. Laptops deliver a safe 13V on their FW sockets. A Under 8gr of lithium content, carry on as many as you want within size and weight limits.

<https://www.thebiketube.com/acros-bosch-wae24162uk-manual-0>